

## Authentique™ Paper and Mod Podge® Keepsake Box

Robin Beam, A.C. Moore

### Supplies:

- Medium Wood Trunk Box, Nicole™ Crafts, 104145702
- Lovely 12" x 12" Paper Pad, Authentique™ Paper, 104750216
- Matte Mod Podge®, Plaid®, 104107932
- SureCut Paper Trimmer, Fiskars®, 104074273
- FolkArt® Acrylic Paint, Bright Baby Pink, Plaid®, 104107482
- Tim Holtz® Sanding Block, Advantus®, 104546076
- Paint Brush
- Small Phillips Screwdriver
- Template, provided

### Instructions:

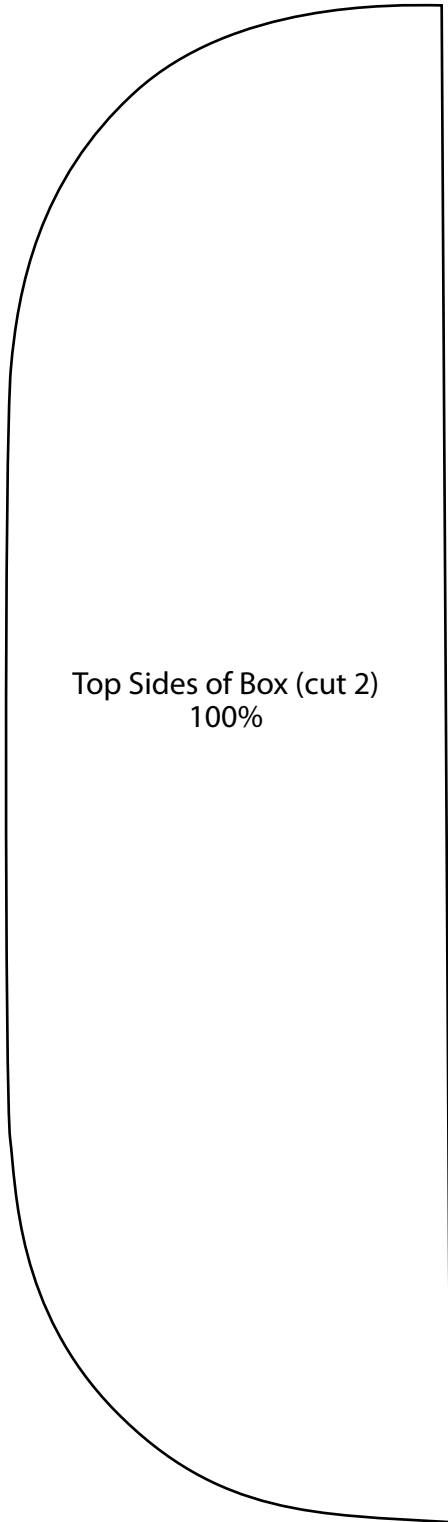
1. Print out templates according to instructions and cut out. Trace onto paper and cut out. In sample provided, the lid was traced so the lace edge was a border on the front of the box. Paper is double-sided, so feel free to mix and match the other sides of the box. Save Valentines' sheet for layered embellishments.
2. Remove hardware with Phillips head screwdriver. (Tip: before removing hardware place cut out paper in place on box and lightly mark where screws are located so it's easier to put the hardware back in place when the box is finished. Lightly sand the box and wipe clean.
3. Paint inside of box and edges Bright Baby Pink. Option: paint bottom of box or decoupage paper onto the bottom.
4. Apply a medium coating of Mod Podge to the back of the paper for the lid of the box. Since this is trickiest side of the box, it's best to work on it first! Apply Mod Podge to the top of the box. Working with the lace edge of the paper to the front edge of the box, place paper down. Smooth out paper and use a brayer if necessary to eliminate any bubbles. If any corners or edges pop or pull up, tuck a little more Mod Podge underneath and again smooth out to remove air bubbles. If any of the Mod Podge squeezes out the side, just use the brush to remove the excess.



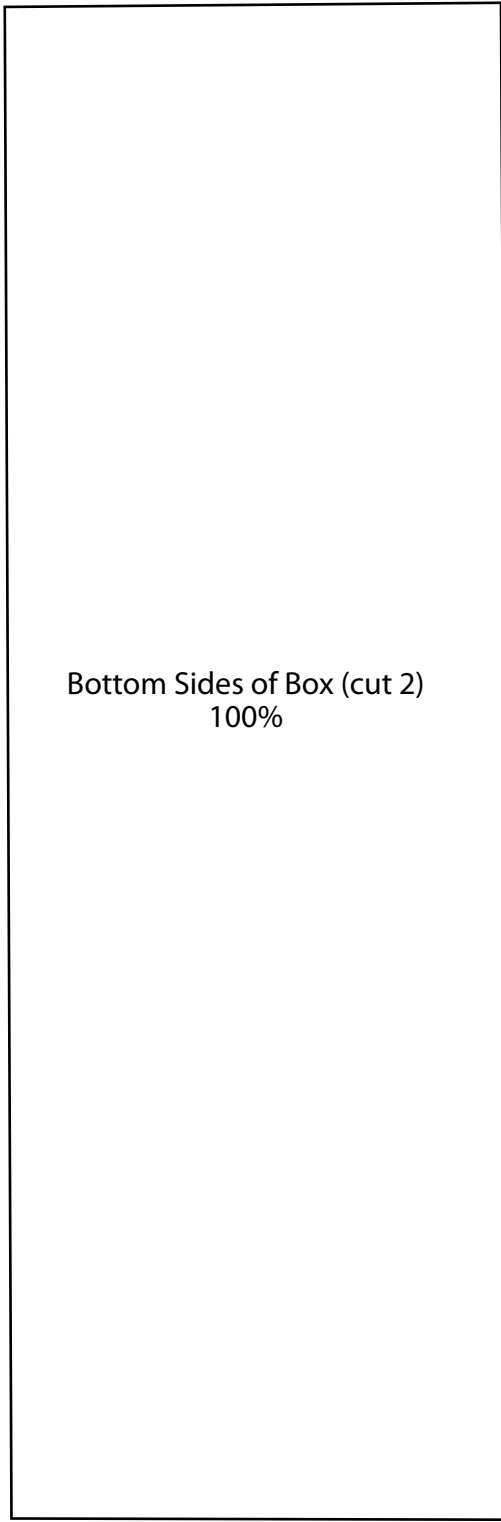
5. Once the paper is glued down, if there is any excess paper hanging over, lightly sand off the edges of the paper with a Sanding Block. (Tip: to avoid this, make sure the paper is accurately cut to the size of the surface.)
6. Coat lid with layer of Mod Podge and let completely dry. Option: paint on 1-2 additional layers of Mod Podge when entire box is decoupaged.
7. Some key tips and tricks from [Mod Podge Rocks](#) blogger Amy Anderson:
  - a. Use a squeegee or brayer to roll out any bubbles.
  - b. Allow each coat of Mod Podge to dry at least 15-20 minutes, as this will reduce wrinkles.
  - c. A medium coat of Mod Podge means that you can see the white Mod Podge completely covering the surface. If it is clear in some areas it means the Mod Podge has already started to dry and additional Mod Podge needs to be applied. Not enough Mod Podge will cause wrinkles.
  - d. For surface coats, apply at least 2 layers. These can be thinner applications.
8. Continue to decoupage the remaining sides of the box with paper following steps 4-6. Option: cut paper for bottom of box or leave painted. (Size of bottom of box is 7-7/8" x 10-1/8").
9. Choose which (or all!) of the Valentines to be added to the box. To place an image so it goes on the top and bottom of portions of the Keepsake Box, use a paper trimmer to cut the piece on angle.
10. Mod Podge the top half of the card to the top of the box, making sure it is snug to the edge of the box top. Place the top of the box on the bottom (remember, the hardware is off of the box, so you're working with two pieces!). Mod Podge the bottom piece, lining it up with the top half.
11. Add Valentines to the inside of the box. Create the illusion of them randomly dropped in the bottom of the box by Mod Podging a Valentine so it is partially on the bottom and up the side of the box and add to the top, inside of the box as shown. Apply 1-2 coats of Mod Podge to the entire interior of the box to seal the paint, too!
12. Apply one last coat of Mod Podge to the entire outside of the box. When completely dry, re-install hardware, referencing the marks created for the placement of the screws.



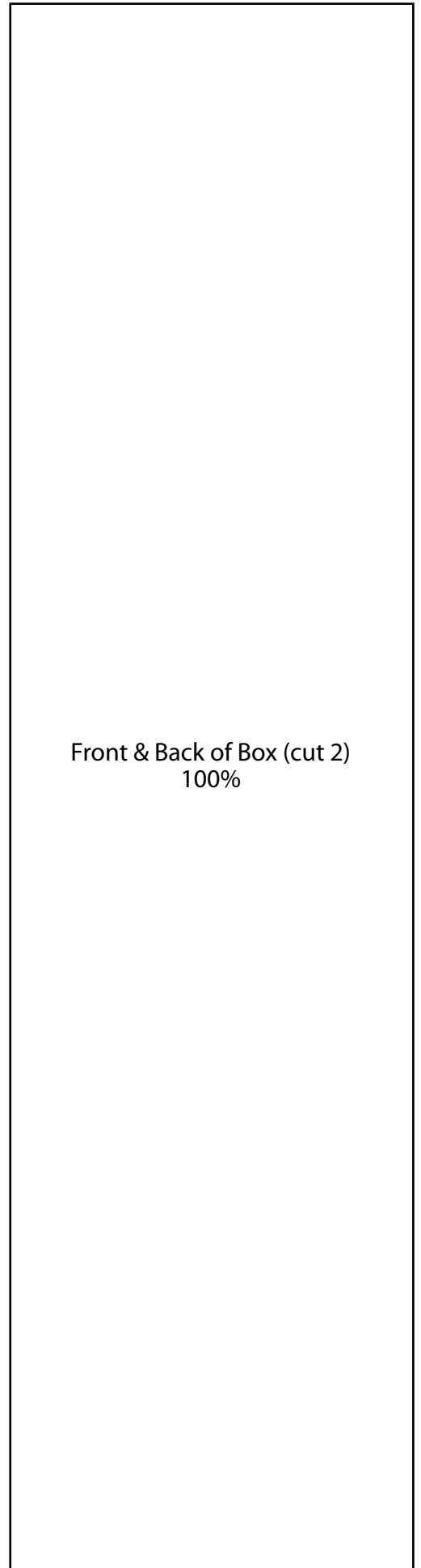
## Keepsake Box Templates



Top Sides of Box (cut 2)  
100%



Bottom Sides of Box (cut 2)  
100%



Front & Back of Box (cut 2)  
100%

Keepsake Box Templates

